



LAGOS STATE PREPAREDNESS STRATEGY



Lagos State Ministry Of Health



LAGOS STATE GOVERNMENT
MINISTRY OF HEALTH

#COVID19Lagos

 @LSMOH

 @lagoshealth

 @ProfAkinAbayomi



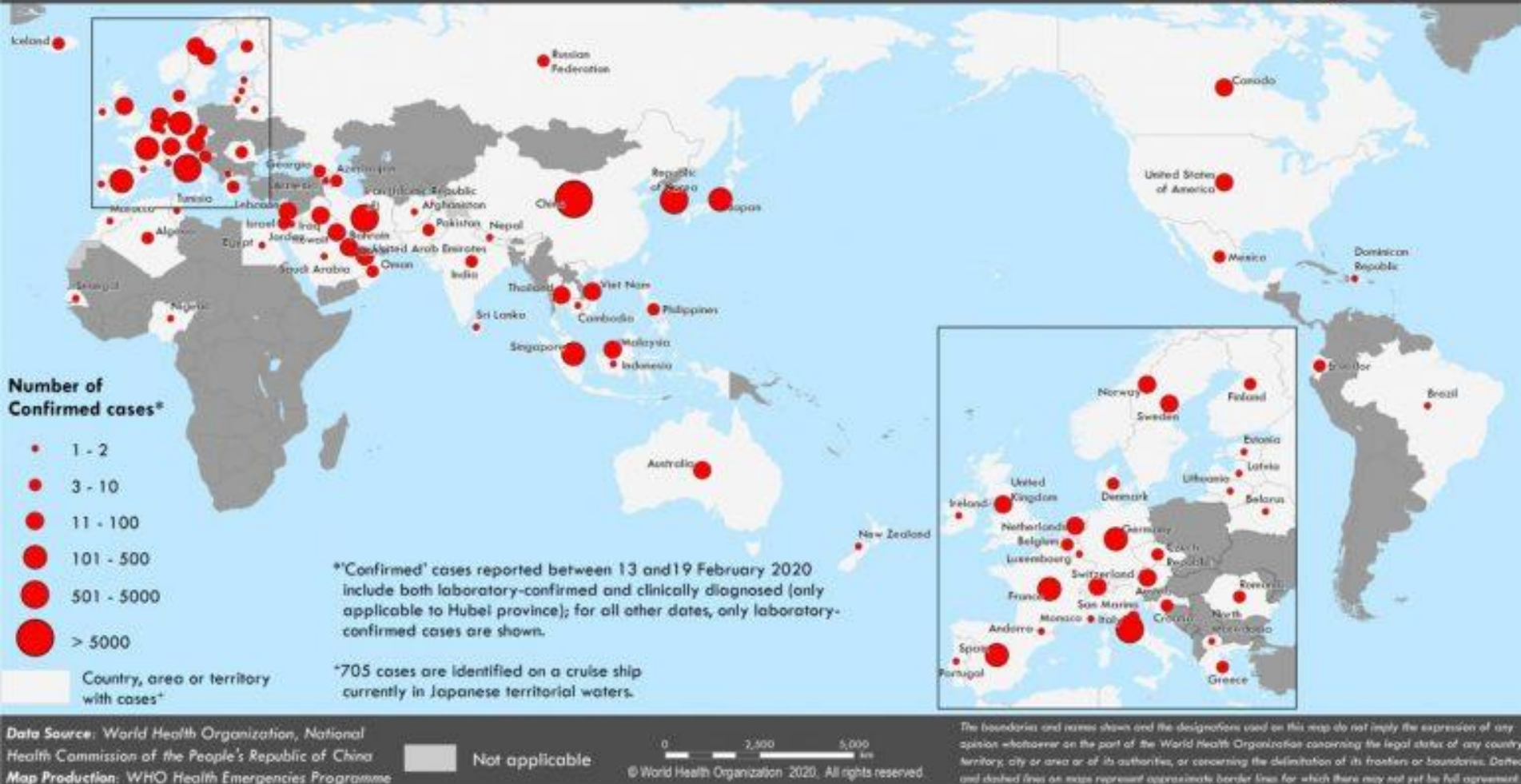
Professor Akin Abayomi
Honourable Commissioner for Health, Lagos

GLOBAL PICTURE

- As at 15th March, 2020,
- **182,424 confirmed cases,**
- **7155 deaths**
- **79,433 recovered**



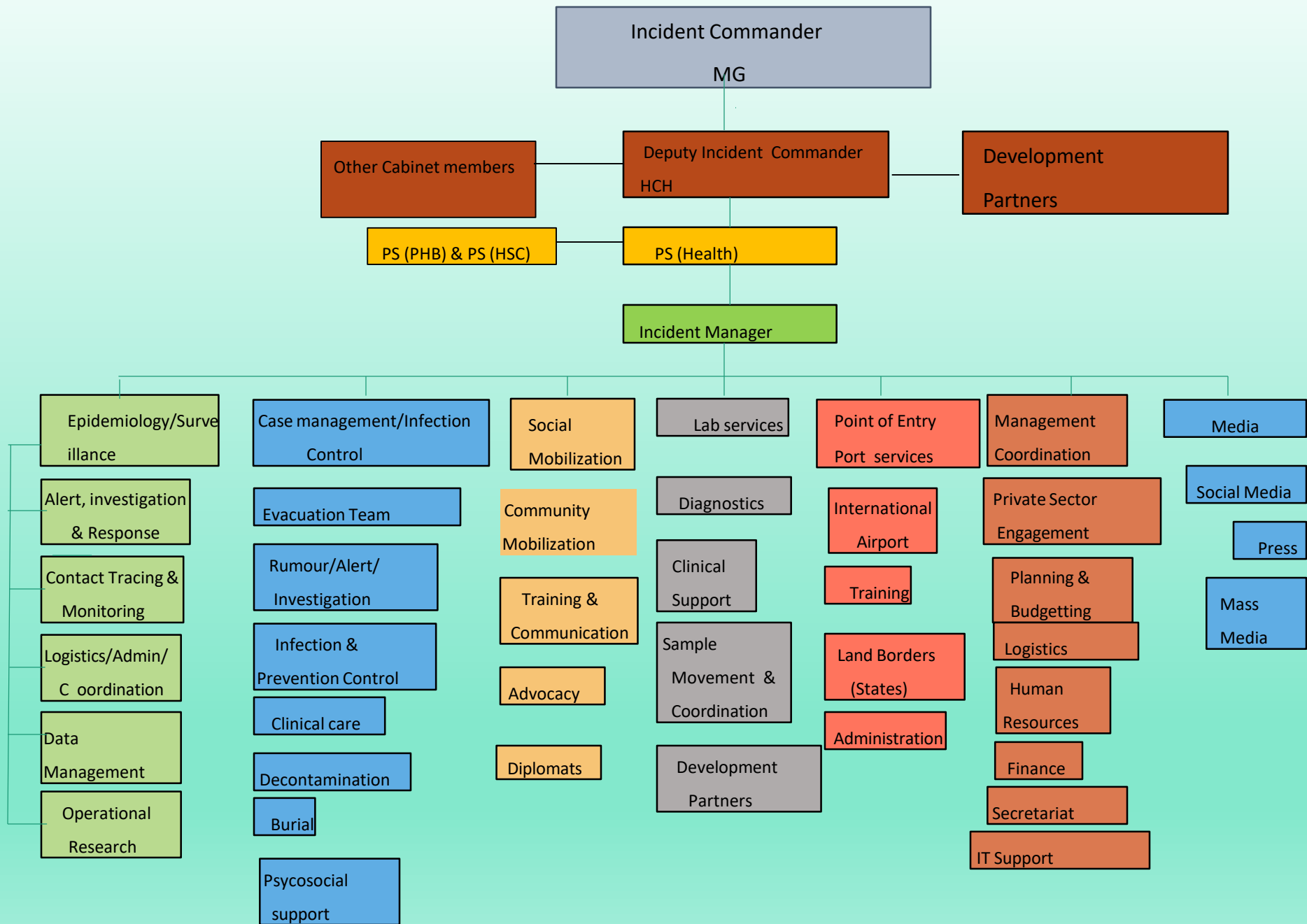
Distribution of COVID-19 cases as of 03 March 2020



COVID_19 MAP



Lagos State coordinates its response to COVID-19 through the establishment of the Incident Command System (ICS) with Mr Governor himself as the Chief Incident Commander while the Honourable Commissioner for Health as the Deputy.





The Emergency Operations Centre



EOC

- Comprised of leadership of the Ministry of Health, Health Service Commission, Primary Health Care Board, Thematic Groups team leads
- Representatives of relevant MDAs
- Representatives from AUCDC, NCDC and development partners like WHO, UNICEF

EMERGENCY OPERATIONS CENTRE – COMMAND & CONTROL FACETS



PATIENT ZERO!


- As at 5th March 2020, only **one confirmed** case has been identified in Nigeria.
- The confirmed case is being managed at the State's infectious diseases hospital (Mainland hospital, Yaba).
- He is in a stable condition.





Status Update

- 44yr old Male Italian, flew into Lagos 24th February on a Turkish airline flight from Milan.
- He stayed at a hotel near the airport the night he arrived
- He was driven to Lafarge Cement Factory at Ewekoro, Ogun state the day after.
- He Felt sick after 2 days and reported at the clinic

- 
- All his contacts have been identified. There is a cumulative total of 179 contacts, of which 86 are linked to Lagos while the rest is linked to other States in Nigeria and other Countries outside Nigeria.

Surveillance



Cumulative
contacts linked to
covid 19- 179



159 passengers



10 crew members



4 airport contacts



4 hotel contacts

Surveillance and Contact Tracing

86 contacts linked to
Lagos

93 linked to other states
countries

57 physically seen

43 Contacts remaining



Case Management

- Patient has been treated as per protocol so far, symptoms have improved, his viral load has also reduced.
- Feeding well
- SPO2 normal
- Doing well and in high spirits



Social Mobilization

- Daily updates at 6pm by biosecurity team
- Updates on public advisory as infection epidemic
- Churches & Mosques have been given IEC materials
- Schools have also been sensitized
- Mobilization at the community level
- Markets and Motor parks

Social Mobilization

- Daily updates on Social media
- @LSMOH
- @profakinabayomi



Prof. Akin Abayomi @P... · 34m ✓

Breaking! **#COVID19Lagos**

● Lagos records another confirmed case of **#COVID19**

● The case is a 30 year old Nigerian 🇳🇬 woman, member of Non- Government Organization community, who travelled from UK to Lagos on 13th of March 2020

[@jidesanwoolu](#)

[@NCDCgov](#)

[@followlasg](#)

[@SegsDr](#) – at Ministry Of Health



Port Health/Point of Entry

- **Cumulative passengers screened at the airport - 81,766**
- **About 3800 passengers come in daily through the Lagos Airport**
- **730 of those are from high risk countries daily**
- **Follow up has been laborious as the numbers grow daily**



An abstract composition of various geometric shapes. In the top left, there is an orange right-angled triangle. To its right is a brown semi-circle. Below the triangle is a brown circle. In the center, there is a large green semi-circle. To the right of the green semi-circle are two vertical blue bars. In the bottom left, there is a large green circle. To its right are several blue curved lines of varying lengths. In the bottom right, there is an orange square.

Research is ongoing
on different
modalities including
traditional and IPC

Infection Prevention Control



**Training of
Stakeholders
on IPC has
commenced**



**Guild of
medical
Directors had
60 members
trained**



**5
Nephrologists
have also been
trained**

Logistics and Management coordination

- Renovations are still ongoing
- Some PPEs have been provided in all government hospitals



LABORATORY



LAGOS BSL-3
LABORATORY IN
TOP
FUNCTIONALITY



14 samples have
been screened so
far. 3 to be done
today

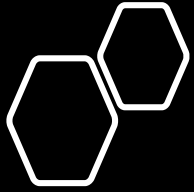
LABORATORY



Follow up testing
of confirmed case
has continued



3 new samples for
processing today



Collaborations and Support

- NCDC,
- Ogun State Government,
- WHO
- UNICEF
- AFRICA CDC



COVID-19 in Africa

**Senegal, Algeria,
Egypt, South Africa
and Nigeria have
cases in Africa**



COVID 19 VS SEASONAL FLU

They are both respiratory illnesses

Spread by droplets

They are both of viral origin

They have similar symptoms

COVID 10 VS SEASONAL FLU;

PARAMETER	COVID-19	SEASONAL FLU
SEVERITY	90,000 Illnesses, 3,000 deaths	32 million illnesses, 18,000 deaths
KNOWLEDGE	Very little is known	Predictable
DEATH RATE	8% in China	0,1% in china
Prevention	None	Vaccine Present



CRITICAL GAPS

- POWER GENERATING SETS
- LOGISTICS AND TRANSPORTATION
- MEDICAL CONSUMABLES, EQUIPMENT, PPE
- PPE
- EQUIPPING A SIDE LABORATORY

ASKS

S/NO	DESCRIPTION	ADDITIONAL NOTES
1.	<p>Designing of three isolation facilities:</p> <p>The State is in the process of engaging an Isolation Facility design expert to support the design of a fit for purpose isolation facility 1, 2 and 3. The engagement of the design expert can be concluded with support from Total E&P</p>	The 1 st and 2 nd request on this list ranks highest on our priority list.
2.	Building and equipping of three Isolation Facilities with a holding capacity of 100 patients each	
a. 3.	<p>Provision of power generating system for the Isolation Facilities</p> <p>a. New diesel generating set of appropriate capacity (250-500 KVA)</p> <p>b. Solar power system for 100kva solar plant</p> <p>c. Inverters for 100kva solar plant</p> <p>d. Refurbishment & relocation of existing generating set to the isolation units</p>	

ASKS

	a. DESCRIPTION	ADDITIONAL NOTES
a. 4	<p>Medical equipment for the Isolation Facilities</p> <ul style="list-style-type: none"> a. Two dedicated artificial ventilating machines b. Two dedicated dialysis machines 	
5	Dedicated side-laboratory for the isolation units	
6	Provision of 100 Beds for isolation units and overflow tents	
a. 7	<p>Personal Protective Equipment</p> <ul style="list-style-type: none"> a. 2000 units of face filtering piece class 2 or 3 respirator b. 2000 units of goggles of face shields c. 2000 units of long-sleeved water-resistant gown d. 2000 pair of gloves 	Estimate based on 6 PPEs set per case for approx. 200 suspected cases & 50 confirmed cases
a. 8	<p>Human Resource Requirements</p> <ul style="list-style-type: none"> a. Healthcare professionals to strengthen airport screening b. Health professionals to perform disease surveillance in community 	

References

- Covid Vs Seasonal flu:
https://www.livescience.com/new-coronavirus-compare-with-flu.html?utm_source=notification
- COVID daily stats:
<https://www.worldometers.info/coronavirus/>
- Case management updates: COVID 19 EOC

- 
- Igbega ipinle eko..